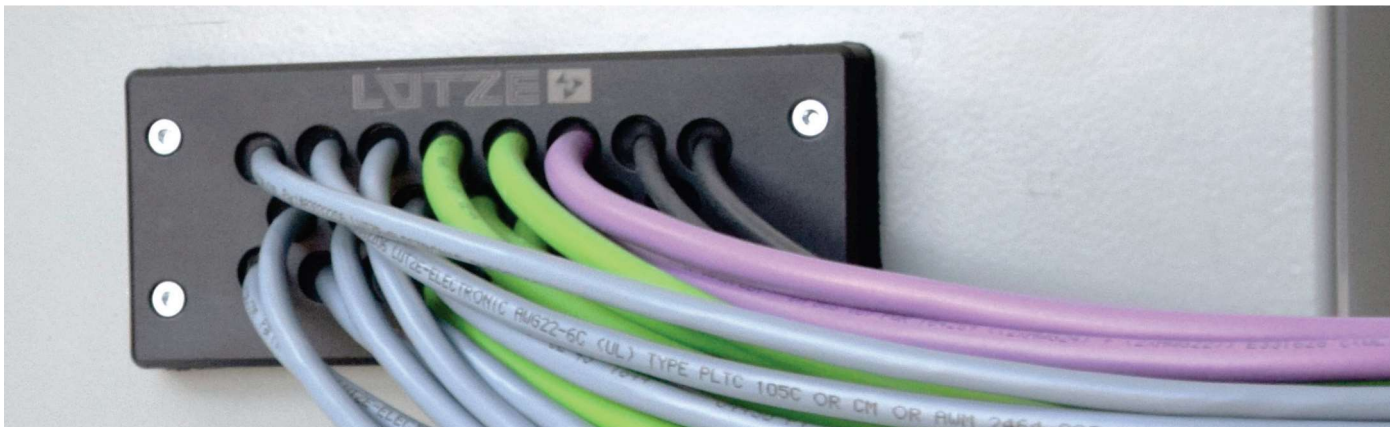


LUTZE Cablefix® X Cable Entry System

Xtreme protection. Xtreme savings. Xtremely easy.

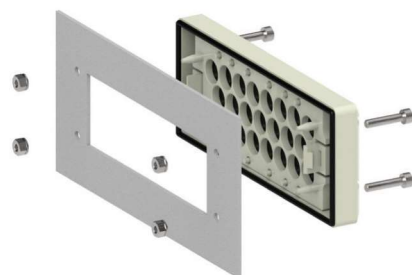


Characteristics

- Cables install easily by pushing the end through the seal from the front
- Integrated seal protects up to UL Type 4X, 12, 13 and IP65
- Saves up to 50% installation space and 80% installation time vs. using individual cable glands
- Easy to install: can be mounted with provided bolts or snapped directly into enclosures with a 1.5mm wall thickness
- Entry points are sealed by default, eliminating the need for blanking plugs
- Standard 112 x 36 mm cutout makes cabinet preparation easy; punches are available from third parties

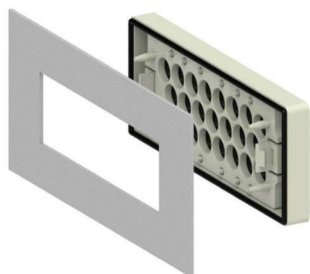


Bolt-mounted Design (for all enclosures)



Part No.	Description	Number of Entry Points	Clamping Range Ø mm	Ingress Protection
606550	Cablefix® X 12	12	12 x 5.0-13.0	UL Type 4X, 12, 13, IP 65
606551	Cablefix® X 23	23	23 x 4.0-8.5	UL Type 4X, 12, 13, IP 65

Snap-in Design (for enclosures with 1.5mm wall thickness)



Part No.	Description	Number of Entry Points	Clamping Range Ø mm	Ingress Protection
606561	Cablefix® X 12	12	12 x 5.0-13.0	UL Type 4X, 12, 13, IP 65
606562	Cablefix® X 23	23	23 x 4.0-8.5	UL Type 4X, 12, 13, IP 65

*UL Type 4X applies to cables having a diameter ≥ 5.0 mm