

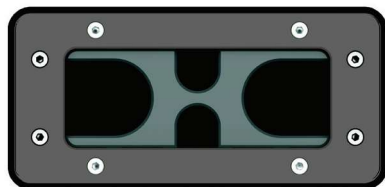
LUTZE Cablefix® One Cable Entry Kits

One kit. One part number. Easy ordering.



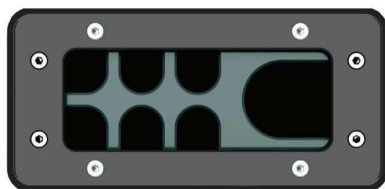
Characteristics

- Suitable for cables with or without pre-installed connectors
- Kits include frame, hardware and the layered seals needed to cover the entire clamping range specified for each entry point
- Kits simplify the specifying and ordering process
- Unused seals are closed by default, eliminating the need for blanking plugs
- Protects up to UL Type 4X, 12, 13 and IP65
- Strong strain relief per EN 62444
- Standard 112 x 46 mm cutout makes cabinet preparation easy; punches are available from third parties



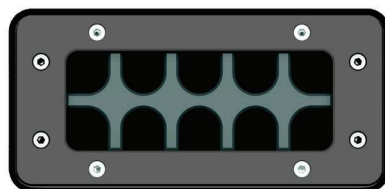
4 Cable Configuration

Part No.	Description	Number of Entry Points	Clamping Range Ø mm	Ingress Protection
606500	Cablefix® One 4 Entry Kit	2 Small 2 Large	2 x 3.5-15.5 2 x 15.5-29.5	UL Type 4X, 12, 13, IP 65



7 Cable Configuration

Part No.	Description	Number of Entry Points	Clamping Range Ø mm	Ingress Protection
606501	Cablefix® One 7 Entry Kit	6 Small 1 Large	6 x 3.5-15.5 1 x 15.5-29.5	UL Type 4X, 12, 13, IP 65



10 Cable Configuration

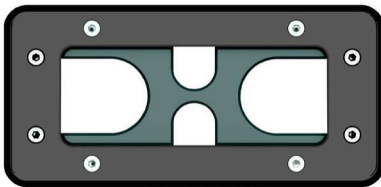
Part No.	Description	Number of Entry Points	Clamping Range Ø mm	Ingress Protection
606502	Cablefix® One 10 Entry Kit	10 Small	10 x 3.5-15.5	UL Type 4X, 12, 13, IP 65

Design a custom Cablefix® One frame for your application

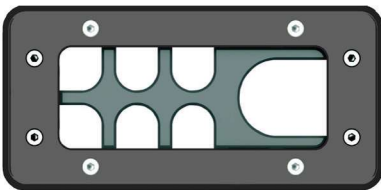
LUTZE Cablefix® One frames can be configured with the specific frame and seals required for your application and ordered as individual components.

1. Select the frame configuration needed for your application, based on the number of entry points and size of the cables required by the application. Individual frames will ship with all components and mounting hardware, but do not include seals.
2. Choose one seal for each cable entry point using the clamping ranges below. One seal must be ordered for each entry point, regardless of whether it will be occupied by a cable or not. Unused seals are closed by default, eliminating the need for blanking plugs.
3. Install frame, seals, and cables as per the included instructions.

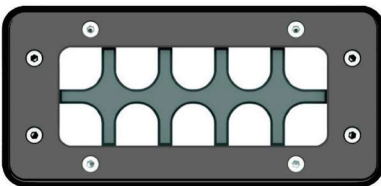
Frames (no seals included)



Part No.	Description	Clamping Range Ø mm	Ingress Protection*	Strain Relief*
606507	Frame for Cablefix® One 4	Dependent on seal selection	UL Type 4X, 12, 13, IP 65	Per EN 62444



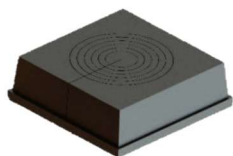
Part No.	Description	Clamping Range Ø mm	Ingress Protection*	Strain Relief*
606508	Frame for Cablefix® One 7	Dependent on seal selection	UL Type 4X, 12, 13, IP 65	Per EN 62444



Part No.	Description	Clamping Range Ø mm	Ingress Protection*	Strain Relief*
606509	Frame for Cablefix® One 10	Dependent on seal selection	UL Type 4X, 12, 13, IP 65	Per EN 62444

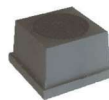
Individual Seals

Seals for large entry points



Part No.	Seal Type	Clamping Range Ø mm
606505	L1	15.5-21.5
606506	L2	21.5-29.5

Seals for small entry points



Part No.	Seal Type	Clamping Range Ø mm
606503	S1	3.5-9.5
606504	S2	9.5-15.5

*Ingress protection and strain relief ratings apply to properly installed complete system, including Cablefix® One frame and all matching seals.